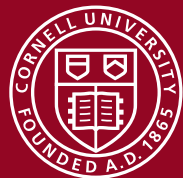




**To Discover, Verify, and Disseminate:
*From NYSAES to Cornell AgriTech***

Anna Katharine Mansfield
Associate Director, Cornell AgriTech
Associate Professor of Enology



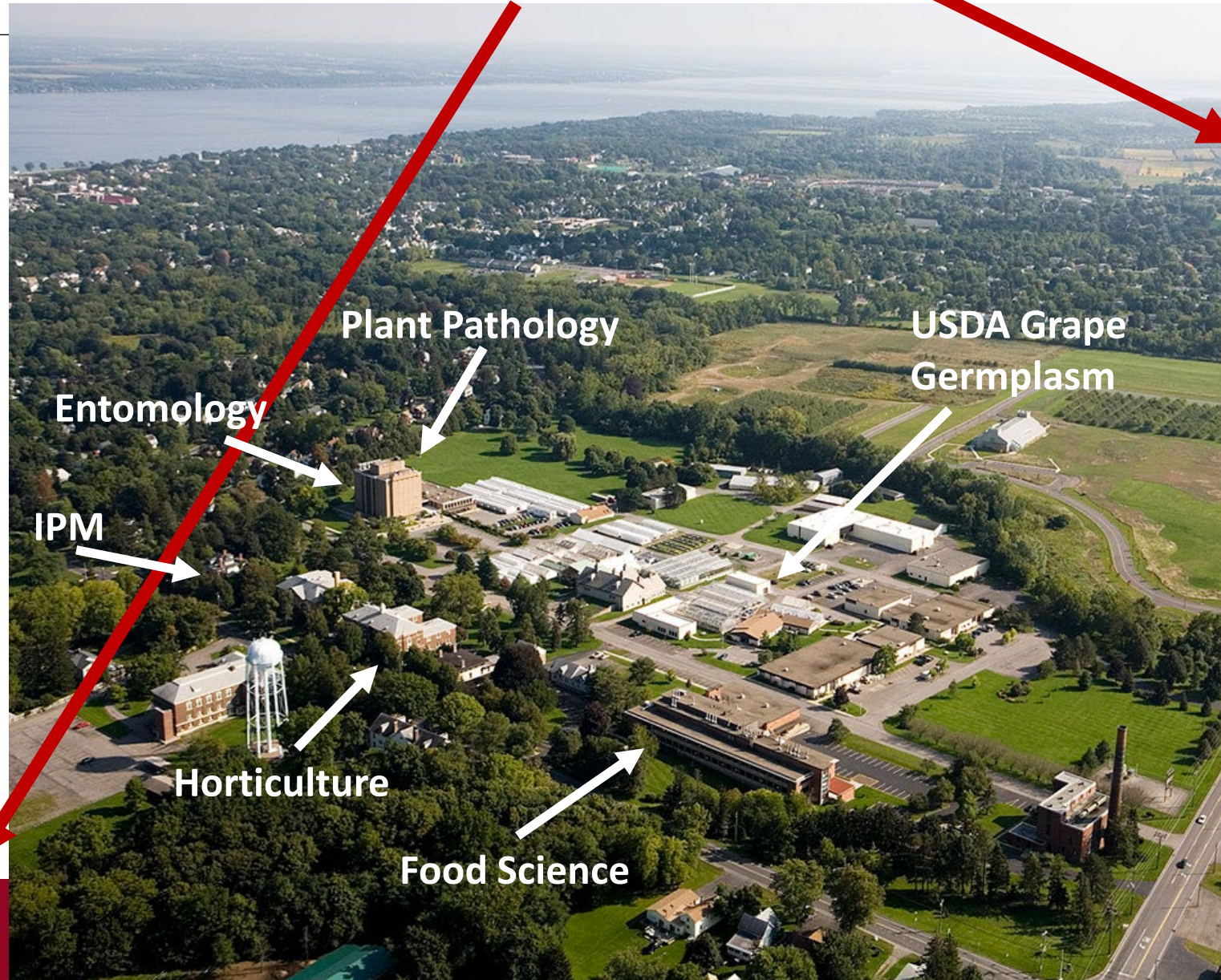
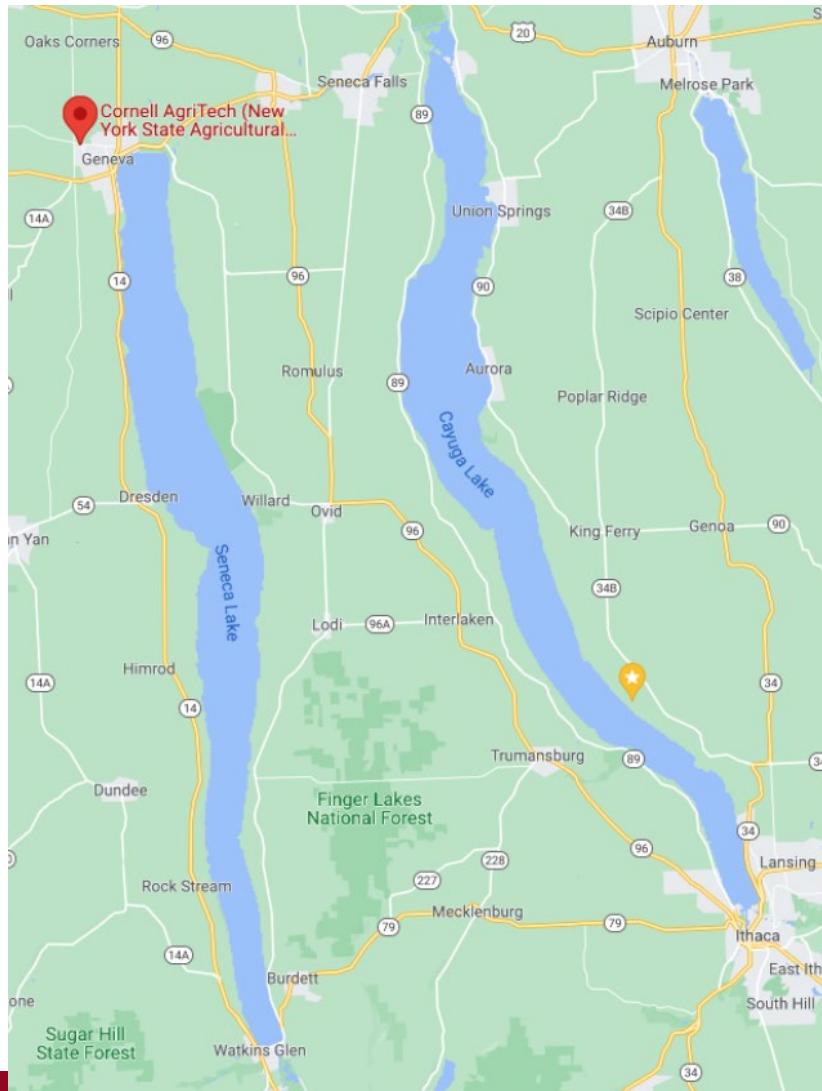
Cornell **CALS**

College of Agriculture
and Life Sciences

Cornell AgriTech

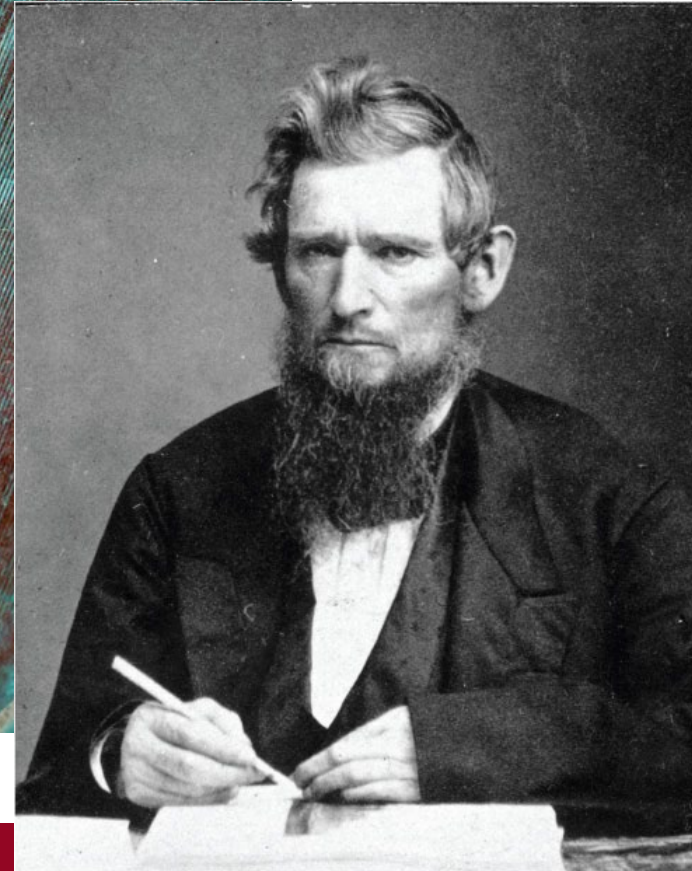
New York State Agricultural Experiment Station

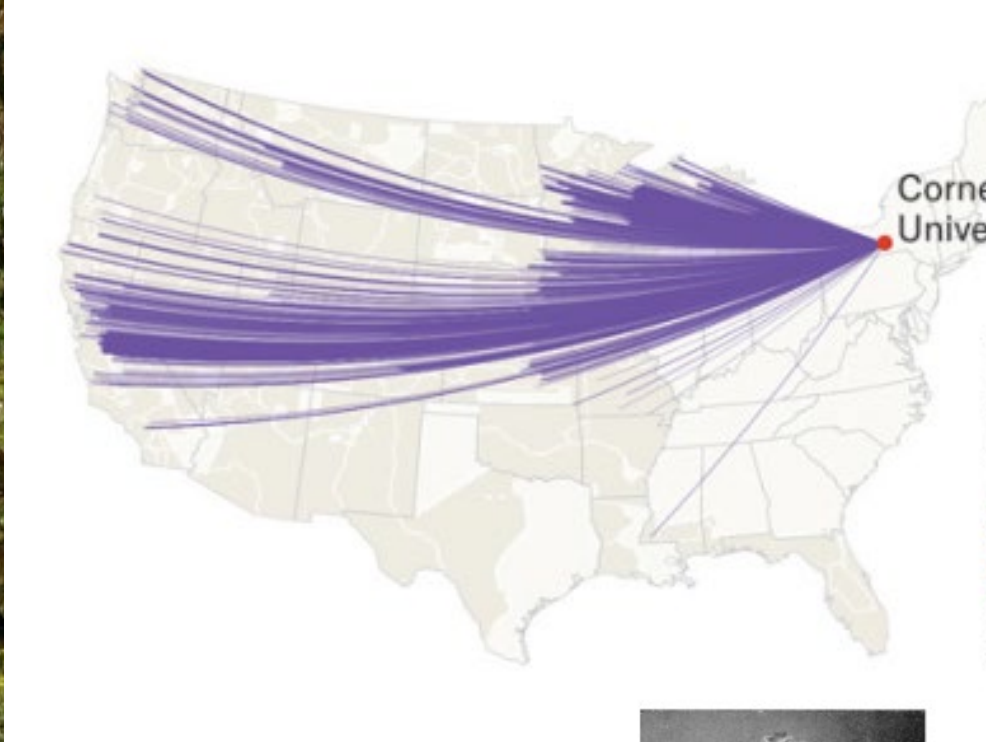
900 acres



Cornell CALS

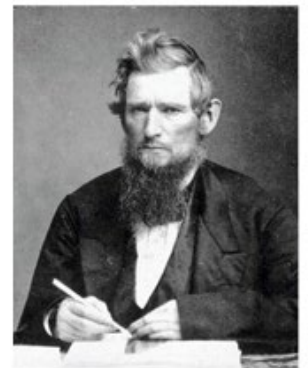
College of Agriculture and Life Sciences



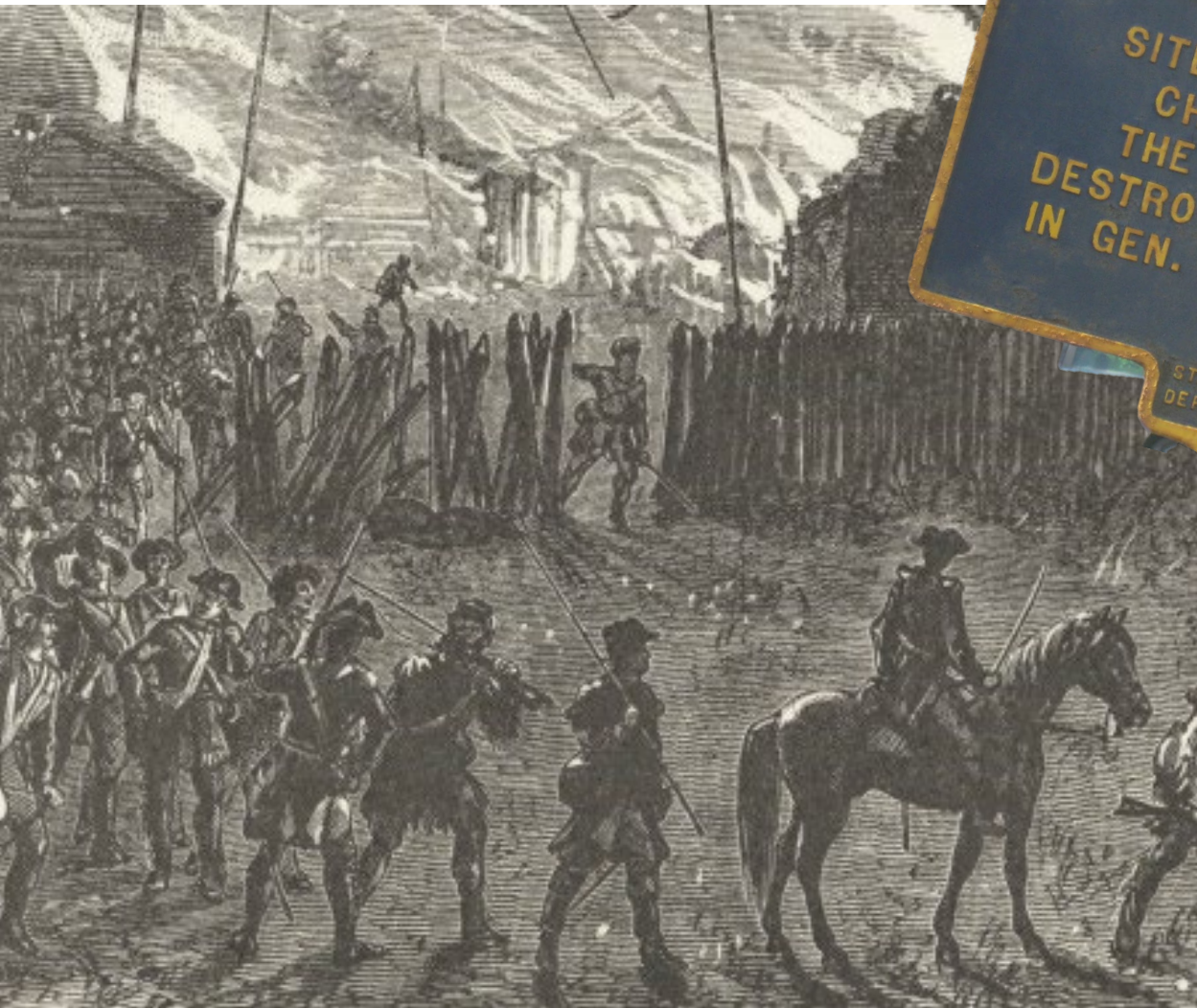


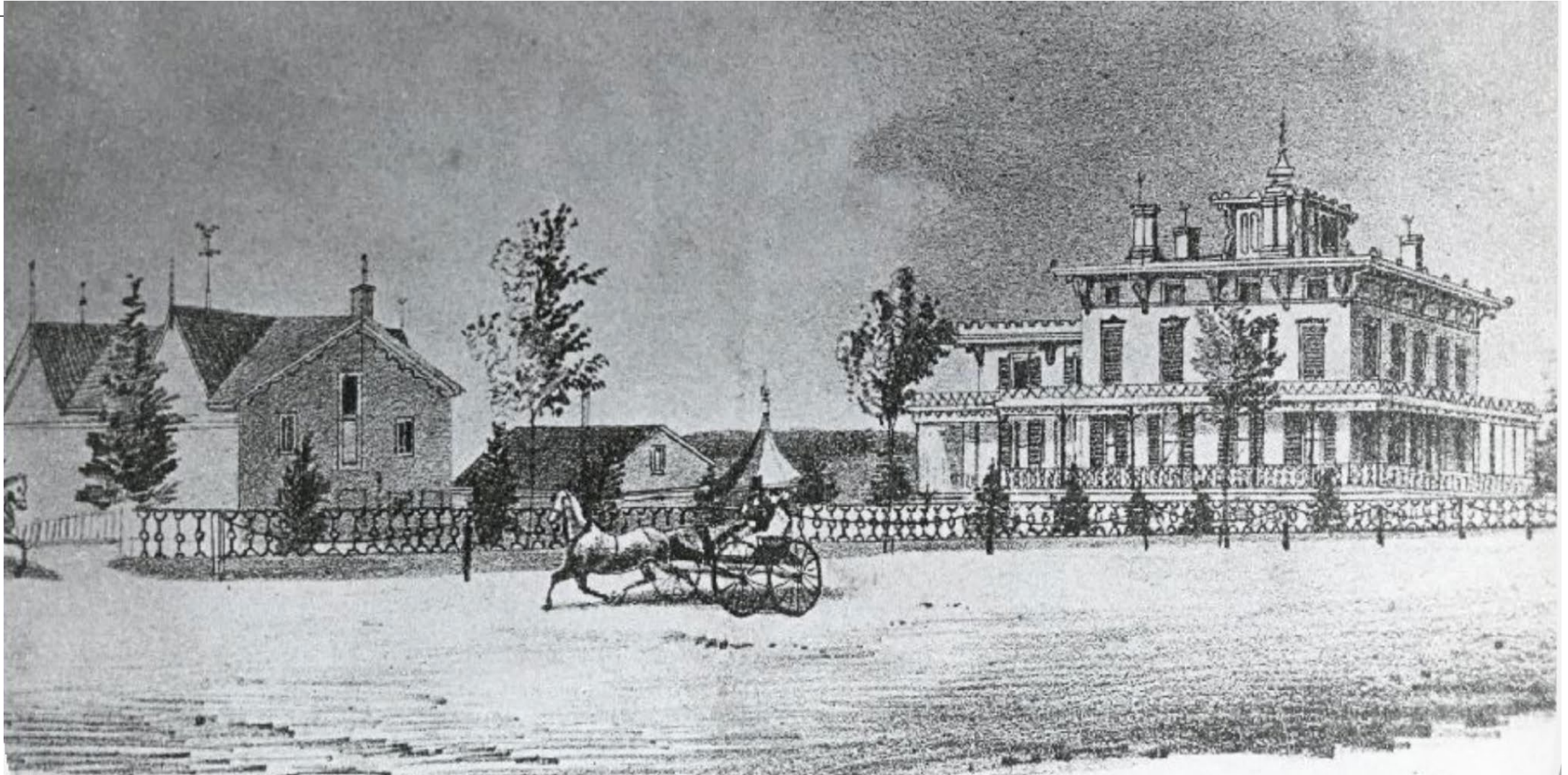
Total Acreage of Cornell's Land Act Parcels by State

STATE	ACRES
Wisconsin	511,458
California	273,570
Minnesota	52,647
Michigan	49,409
Nebraska	27,403
Colorado	17,625
Iowa	15,505
Kansas	12,128
Washington	8,922
Montana	2,759
Oregon	1,909
South Dakota	1,753
Utah	1,644
Missouri	794
Mississippi	311
TOTAL	977,909



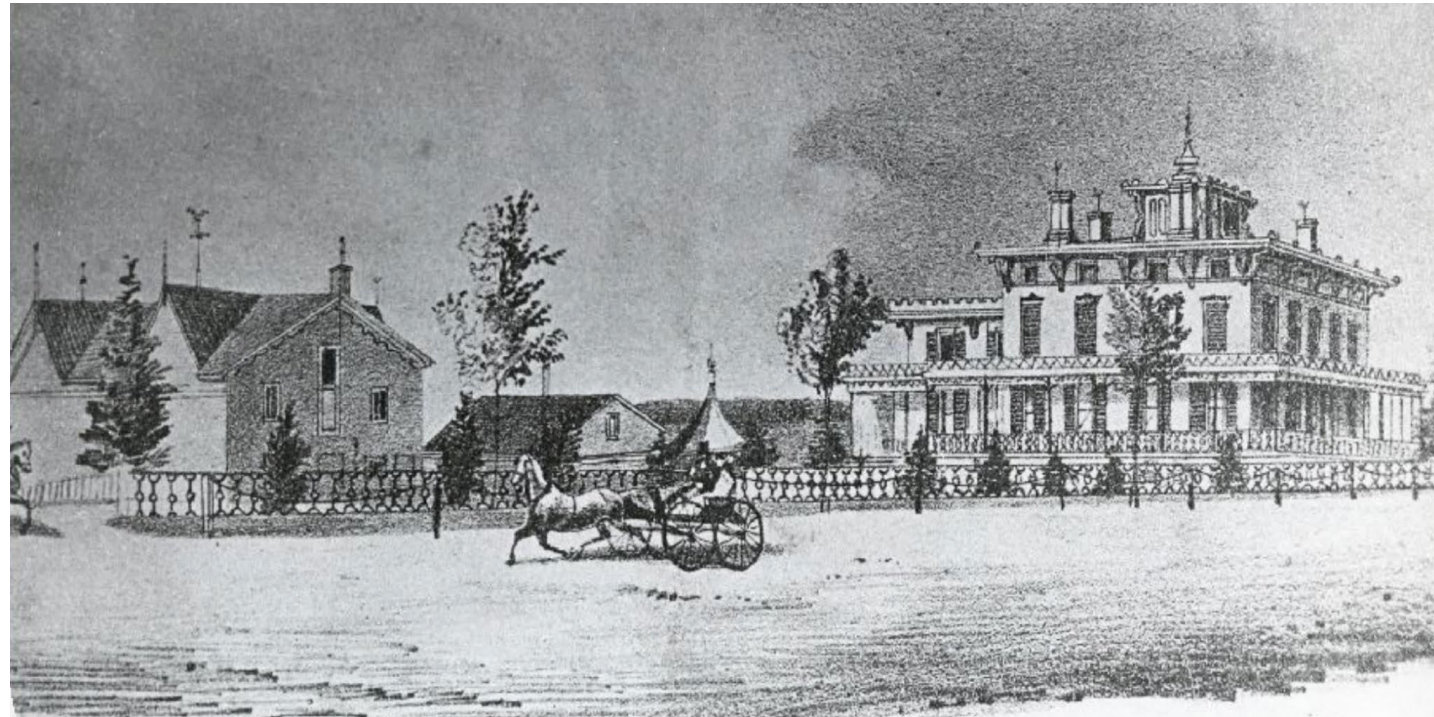
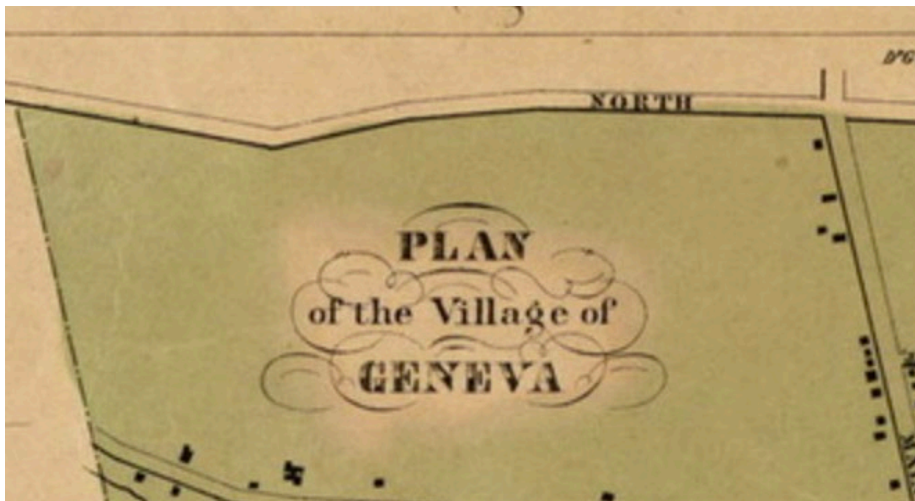
Ezra Cornell helped his namesake university raise nearly \$6 million from expropriated Indigenous land, a significantly higher profit than its nearest rivals.





1880: NY State Legislature approved the creation of the New York State Agricultural Experiment Station

1882: Denton Farm (130 acres) purchased in Geneva





E. Lewis Sturtevant

First Director: E. Lewis Sturtevant

The objectives of the Station were to
“...discover, verify, and disseminate.”

“The Station had an obligation to
make findings available to those who
would use them.”

Fruit & vegetable field trials

Milk & cheese production

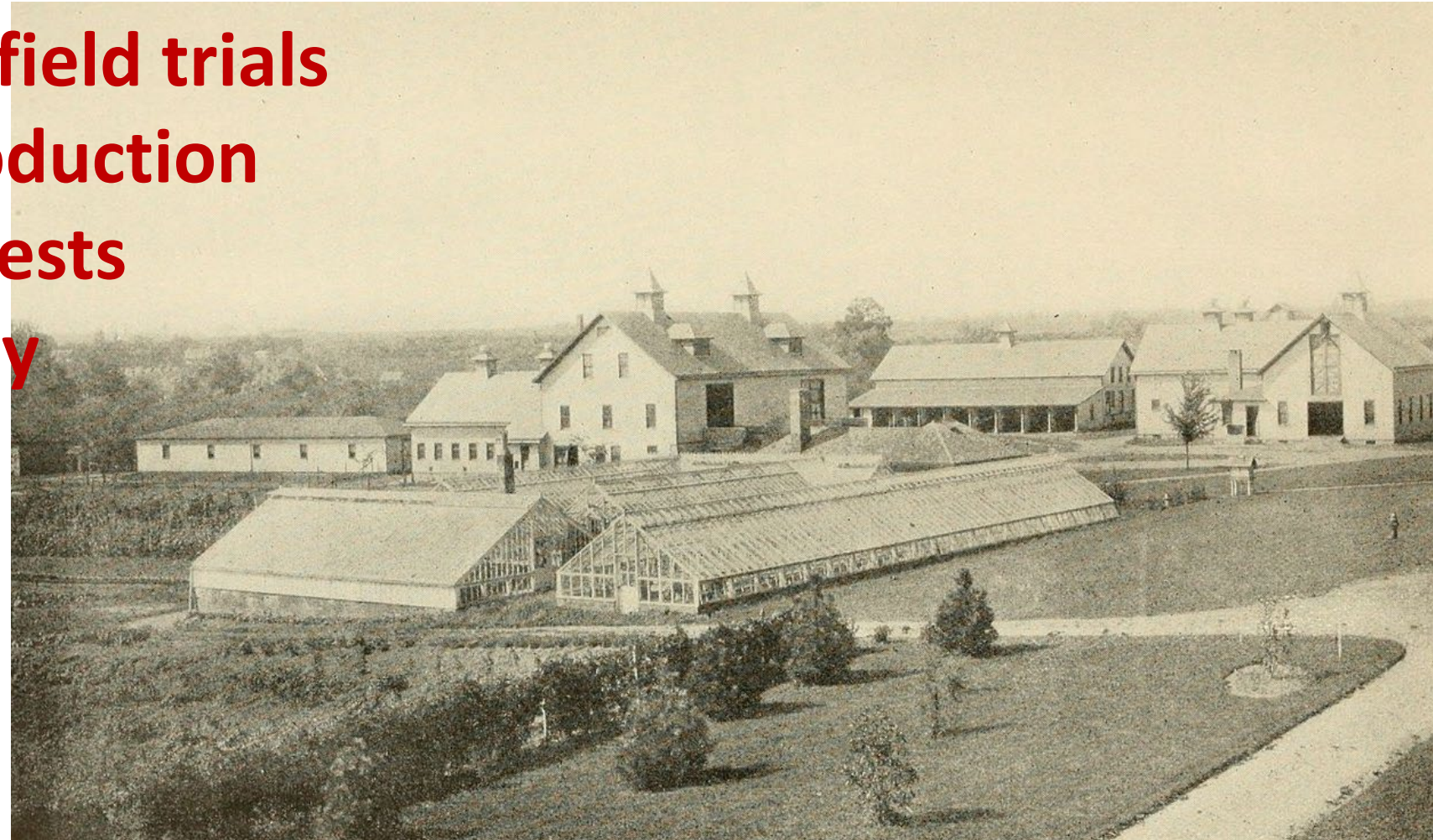
Dairy cattle feed tests

Fertilizer chemistry

Plant diseases

Weed studies

Insect pests



Farm visits

Farm bulletins

Annual reports

Farmer's meetings

Illustrated monographs

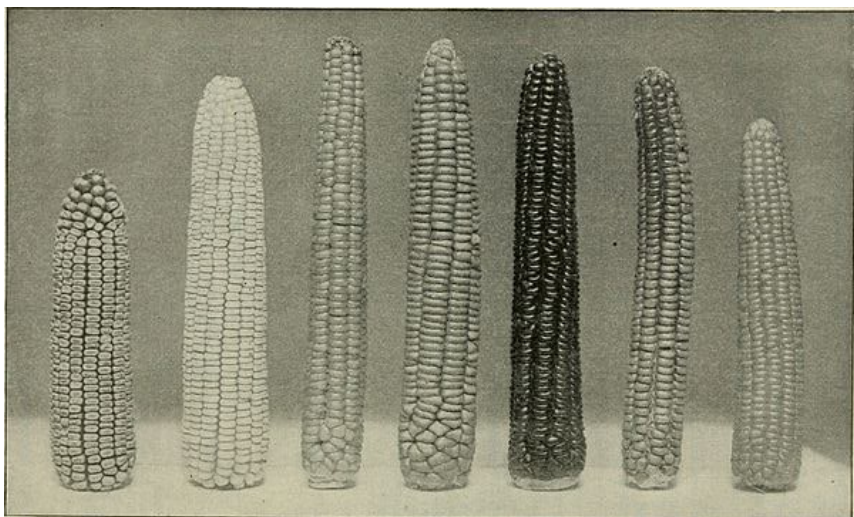
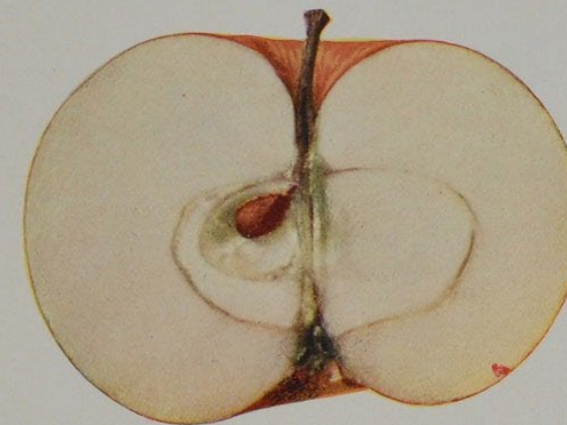
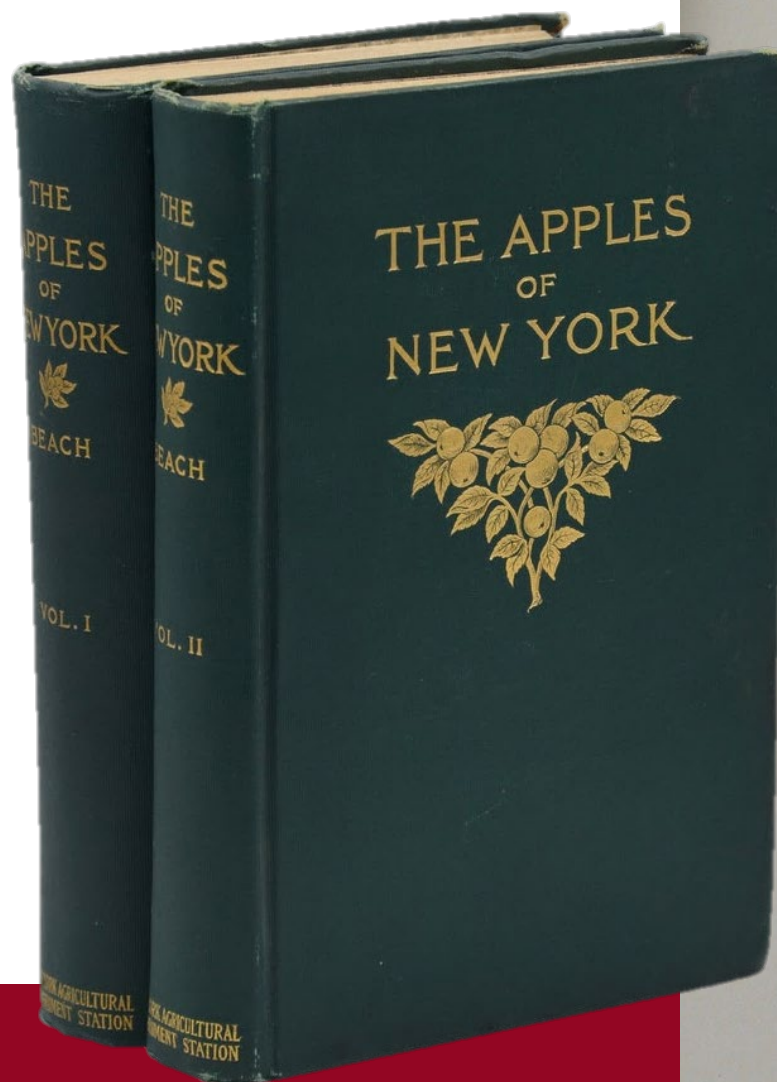


FIG. 99.—Some of the corn varieties tested in New York State in 1911. From left to right: *Pride of the North*, *Wisconsin No. 7*, *Genesee Valley*, *Hall's Gold Nugget*, *King Philip*, *Canada Smit Nose*, *Twelve-rowed Yellow Flint*



NEWTOWN SPITZENBERG

- Cooperative Extension Service in Land-Grant Institutions
- USDA-academic partnership
- Educate rural Americans about advances in agricultural practices and technology



The Smith-Lever Act 1914



Cornell Home Economics 1918



CORNELL Reading-Course for Farmers' Wives

PUBLISHED BY THE COLLEGE OF AGRICULTURE OF CORNELL UNIVERSITY,
FROM NOVEMBER TO MARCH, AND ENTERED AT ITHACA AS SECOND-CLASS
MATTER UNDER ACT OF CONGRESS OF JULY 16, 1894. L. H. BAILEY, DIRECTOR.

MARTHA VAN RENSSELAER, *Supervisor.*

SERIES II. ITHACA, N. Y. No. 9.
THE FARM FAMILY. FEBRUARY, 1904. FARM HOME INDUSTRIES.

FARM HOME INDUSTRIES.

IN no occupation is there such a variety of industries, not necessarily carried on as a business, as in the farm home. Eggs, a staple article of diet, are taken by the hatful from the barn to the house; the bees feeding from the clover-field, leave the sweet honey in the hive needing only to be gathered for the table; the sheep on the hillside are sheared to

1923: NYSAES became part of Cornell's College of Agriculture



1943: All dairy programs moved
to Ithaca



AUG 1, 2018

‘Cornell AgriTech’ new name for New York State Agricultural Experiment Station

We grow things.

**We grow fruits, vegetables, and
the industries they support.**

Our faculty, staff and students conduct groundbreaking, interdisciplinary food and plant research in laboratories and 900 acres of fields, orchards and vineyards.

